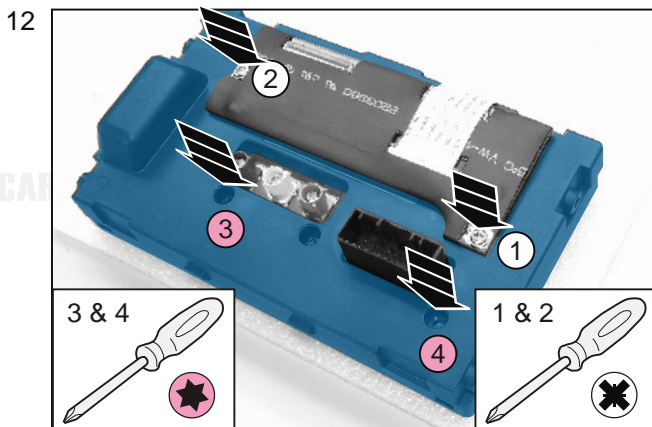
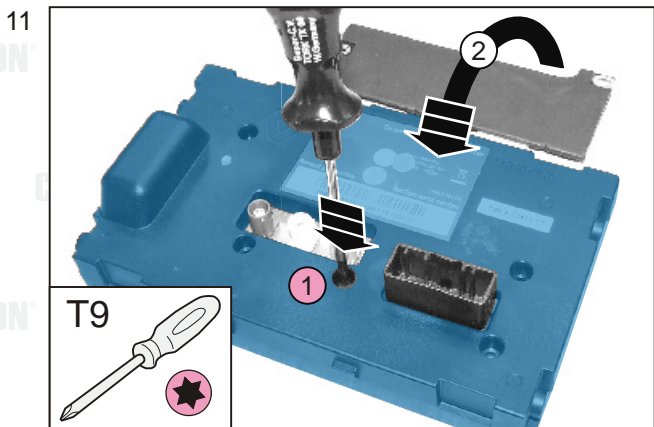
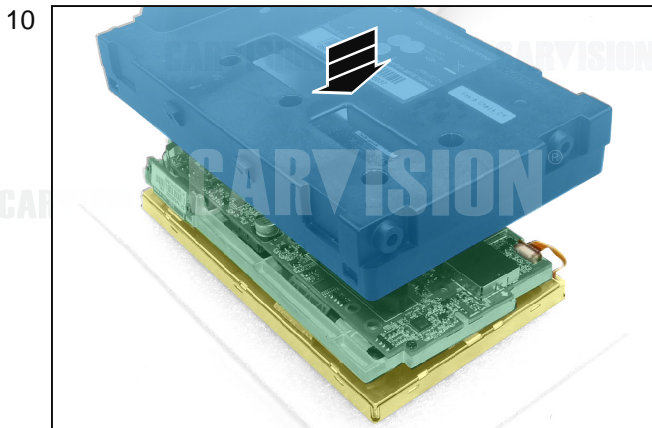
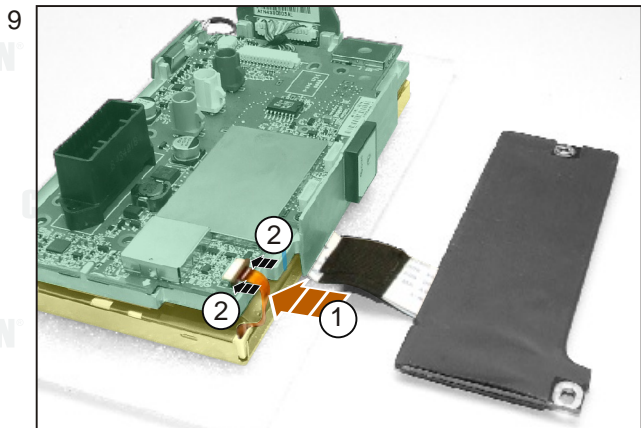


TOMTOM navigationboard 2010



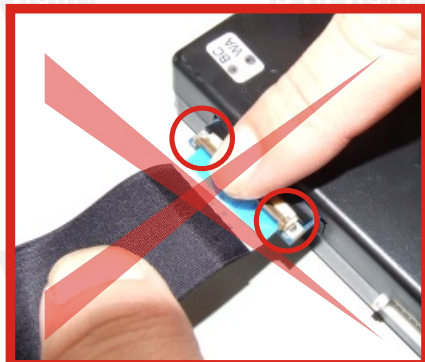
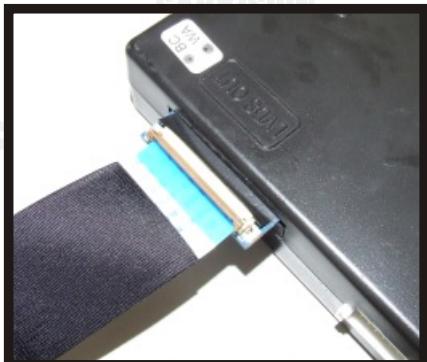
TOMTOM navigationboard 2011





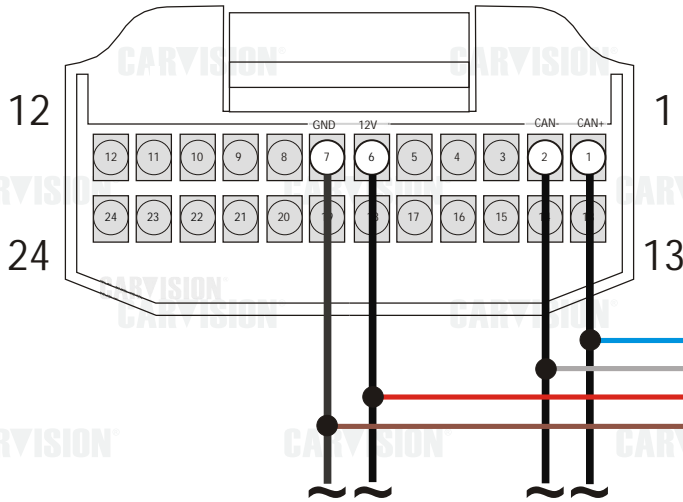
Use two fingers to lock the flat cable connector like you see below!

Don't lock it in the middle



CAN BUS

Backside of the 24 Pins connector seen from behind the monitor

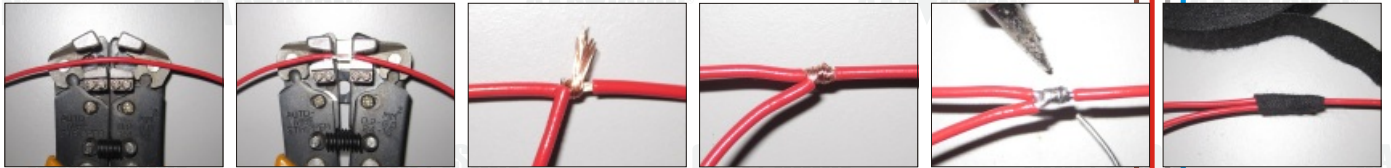


Position 7

- Position 7 Ground Add the BROWN ground cable from the CAN box
- Position 6 12V BATT Add the RED 12V BATT cable from the CAN box
- Position 2 CAN low Add the GREY CAN- cable from the CAN box
- Position 1 CAN high Add the BLUE CAN+ cable from the CAN box

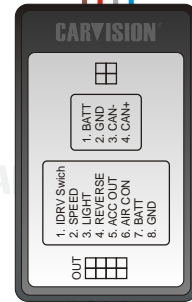
- (1) CAN + (BLUE)
- (2) CAN - (GREY)
- (6) 12V +30 (RED)
- (7) Ground (BROWN)

Add an additional cable without cutting the original cable



Only when the CAN box is not generating the 12V reverse signal

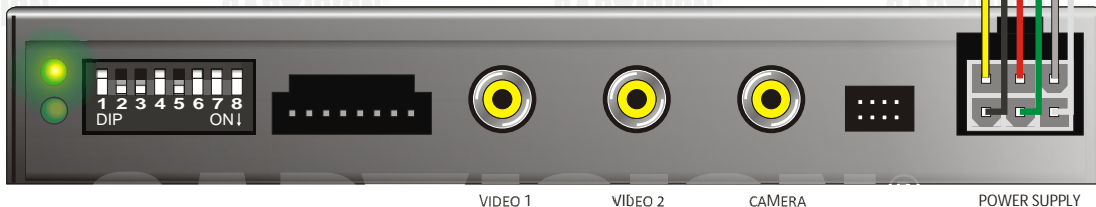
12V reverse signal



solate green
CANbox side)

- | | | |
|---|---------|---|
| 1 | RGB | NOT USED (set UP/ OFF) |
| 2 | VIDEO 1 | ONLY WHEN VIDEO 1 WILL BE USED |
| 3 | VIDEO 2 | ONLY WHEN ALSO VIDEO 2 WILL BE USED |
| 4 | X | X |
| 5 | CAMERA | ONLY WHEN THE REVERSE CAMERA WILL BE USED |
| 6 | X | X |
| 7 | X | X |
| 8 | X | X |

- YELLOW 12V BATT
- RED 12V ACC
- BLACK GROUND
- GREEN 12V REVERSE (cut the green wire)
- WHITE INTERFACE TRIGGER (5-12V PULSE)

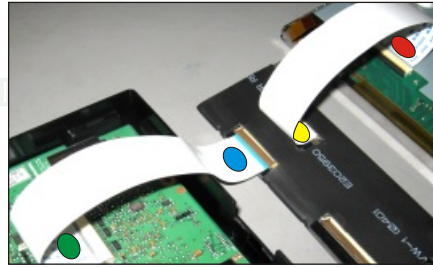


TROUBLE SHOOTING

The monitor is not showing the original image

Make sure the flat cables have the colored marks at the right position! (See picture)

The switchboard is running one by one when the interface is not connected or active.



The monitor is not showing external images

Make sure the long flat cable with the blue marks is connected like the pictures.
The blue marks should be located on the top side.

No camera image check:
Dip switch 5 ON (down)
No video image check:
Dip switch 2 ON (video 1)
Dip switch 3 ON (video 2)

