

Opel R4.0 / navi 4.0 **ALL-IN-ONE**

Camera Video interface

Compatible with radio/navi LCD models:

LC7E / LN7E



Article code: 300 213

Check LCD model before installation



Remove cover



Unlock the front/LCD carefully



Disconnect the LCD carefully



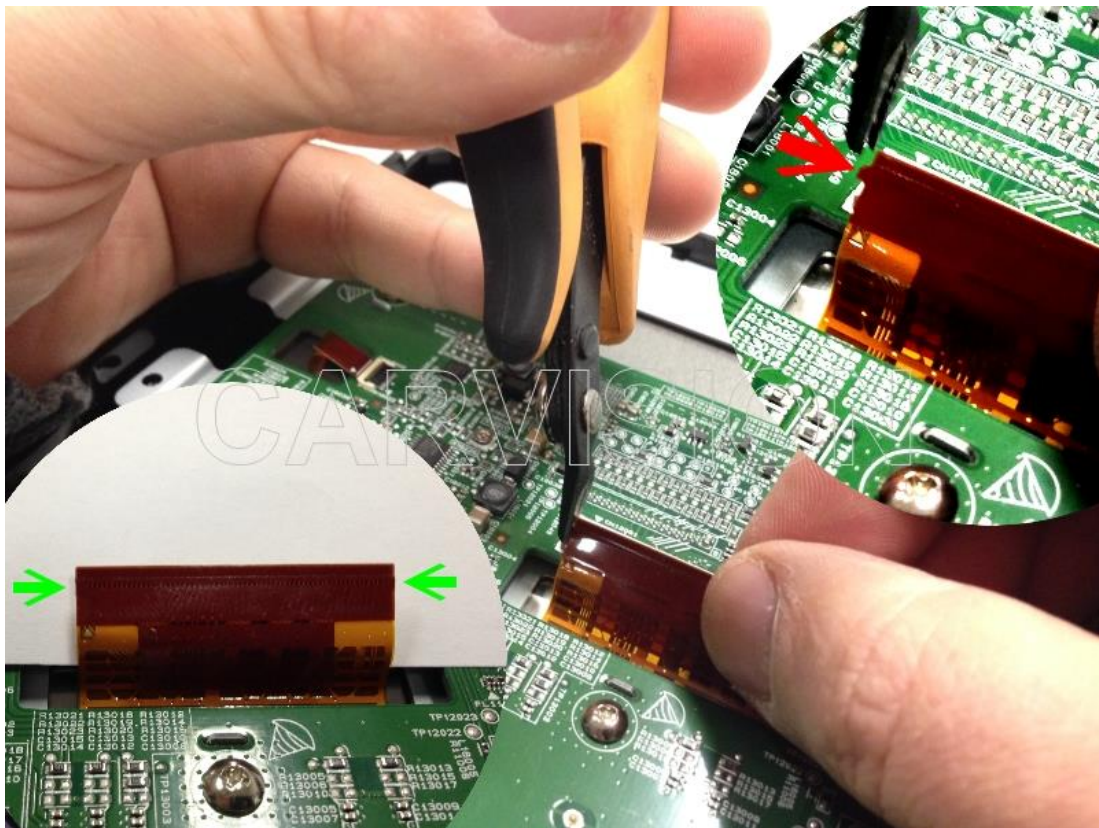
Remove metal frame from LCD



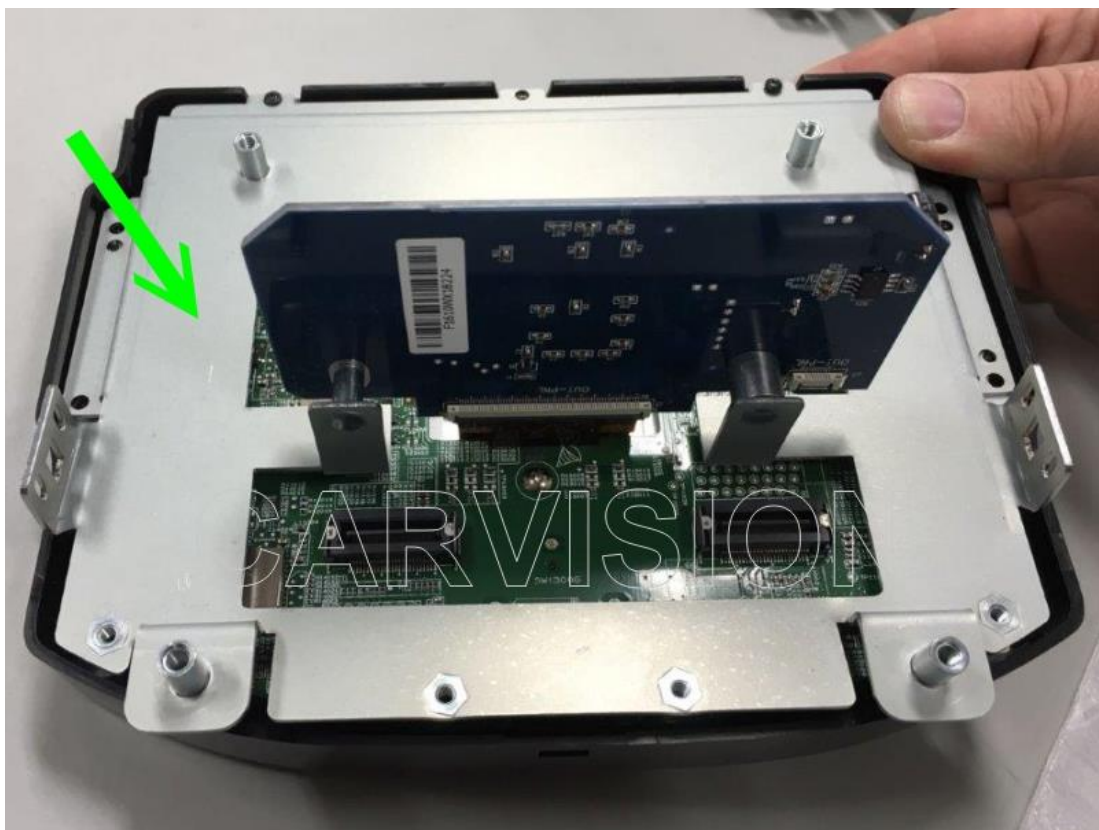
Unlock the flat cable carefully



Remove the “ears” of the original cable to make it straight



Place the new metal cover and mount the switchboard on it



Check all connections for sure



Mount the LCD back on the main unit and connect the grey cable from the switchboard to the interface box. Fix the grey cable to avoid bad connection



