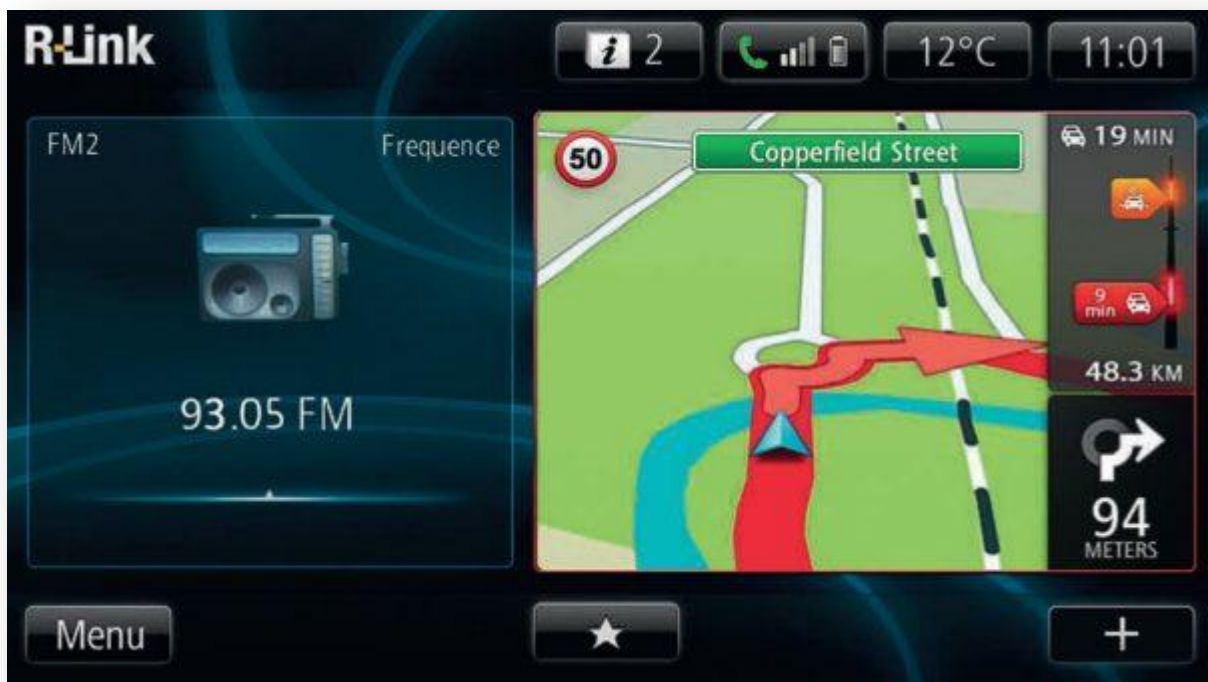


Renault / Opel / Smart
R-Link (TOMTOM) interface
installation manual



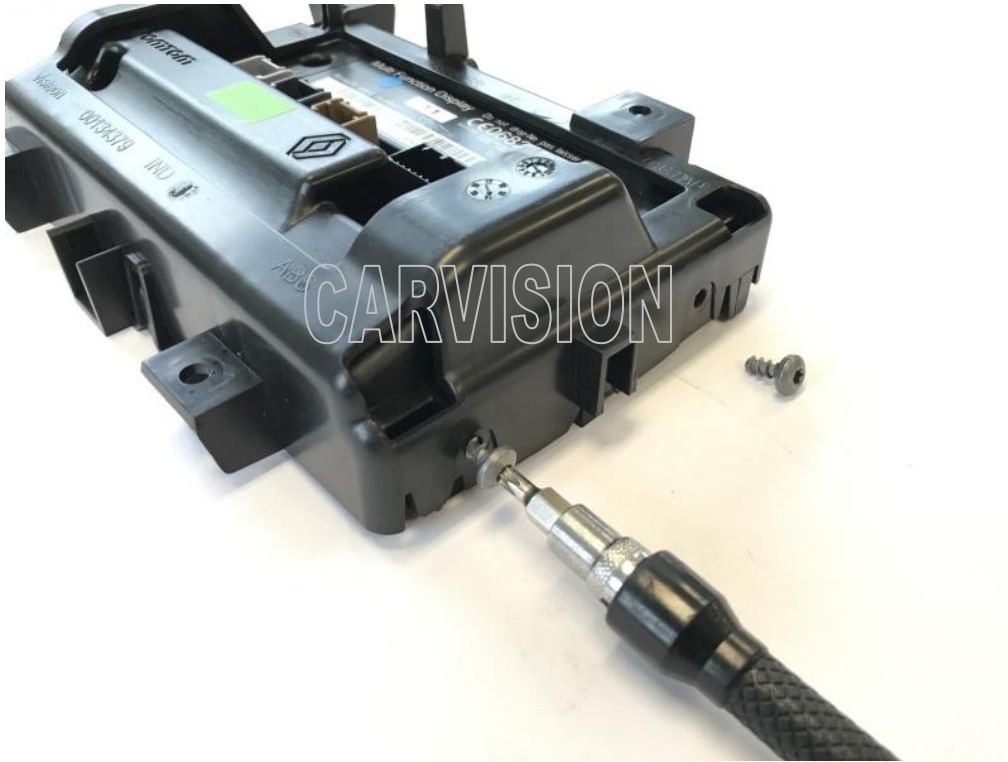
Article code: 300 299
(SEP 2017)

Example installation

Check LCD type before installation



Remove the screws of the plastic cover



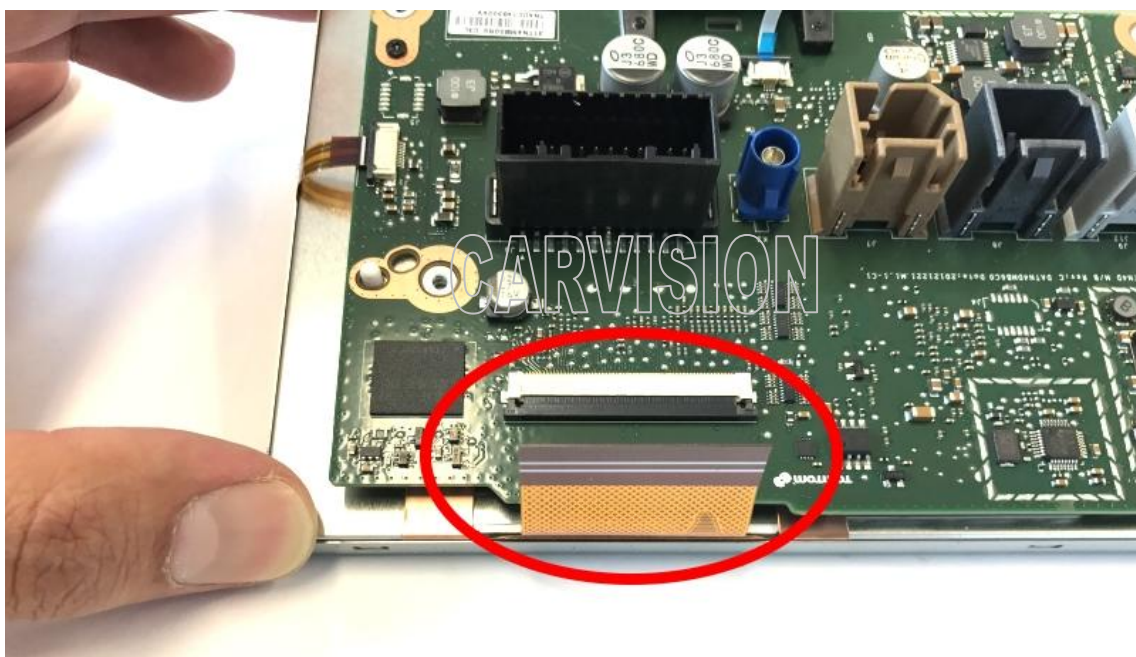
Remove plastic cover from LCD housing



Remove the screws of LCD housing



Unlock the LCD ribbon cable very carefully
Avoid damage and do not use any solid tools!



Connect the switchboard as shown below
Be careful with the ribbon cables!



Connect the original LCD ribbon cable with the right cable of the switchboard



Fix the switchboard on the LCD housing as shown below

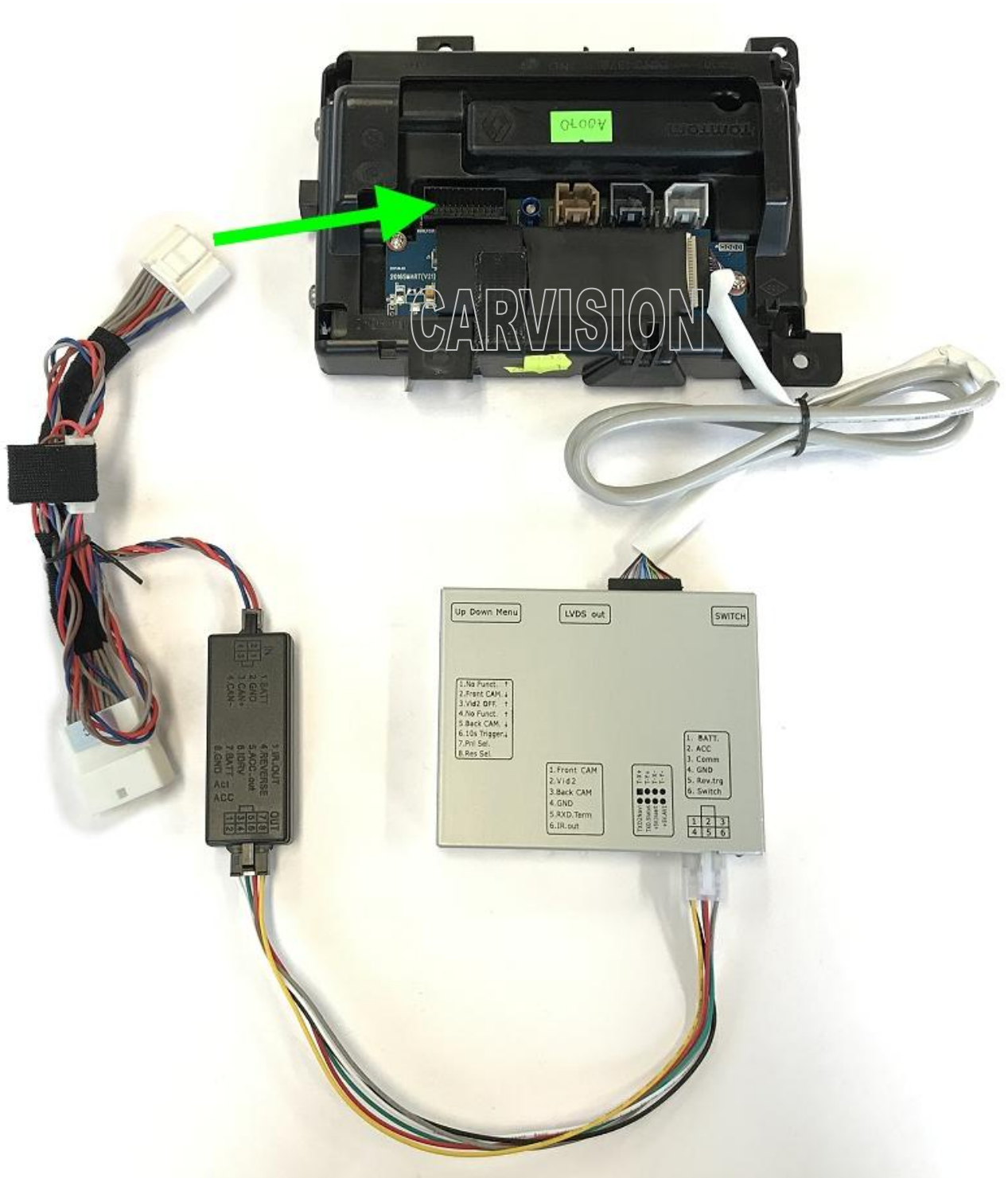




Fix the plastic cover back on LCD housing



Connect the power cable in between
and the interface as shown below



Active needed video inputs like following:

- CAM: DIP switch 5 down
- AV1: DIP switch 2 down
- AV2: DIP switch 3 down



* DIP switch 1,4,6,7,8 must set up (not used).

Camera / Video inputs:



When interface is not reacting by CANbus, reverse wire (green) should be connected with an analog (12V) reverse signal. It's also possible to connect the other power signals without CANbox, analog as below:

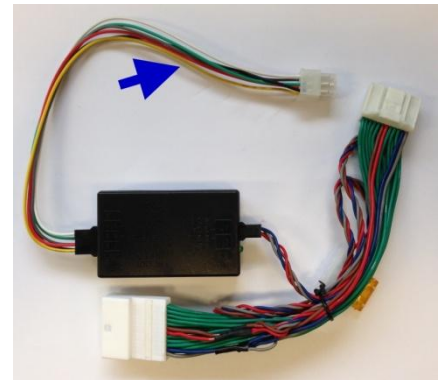
Yellow + red: +12V acc.

Black: ground

Green: +12V reverse

White: optional (+12V, switch from OEM to AV1 / AV2)

Grey: n.c.



Interface menu settings:

Installer may use the 3 keys MENU, DOWN, UP on the (bottom or side) interface box to change external (camera) image settings if needed.

