

MB Vito

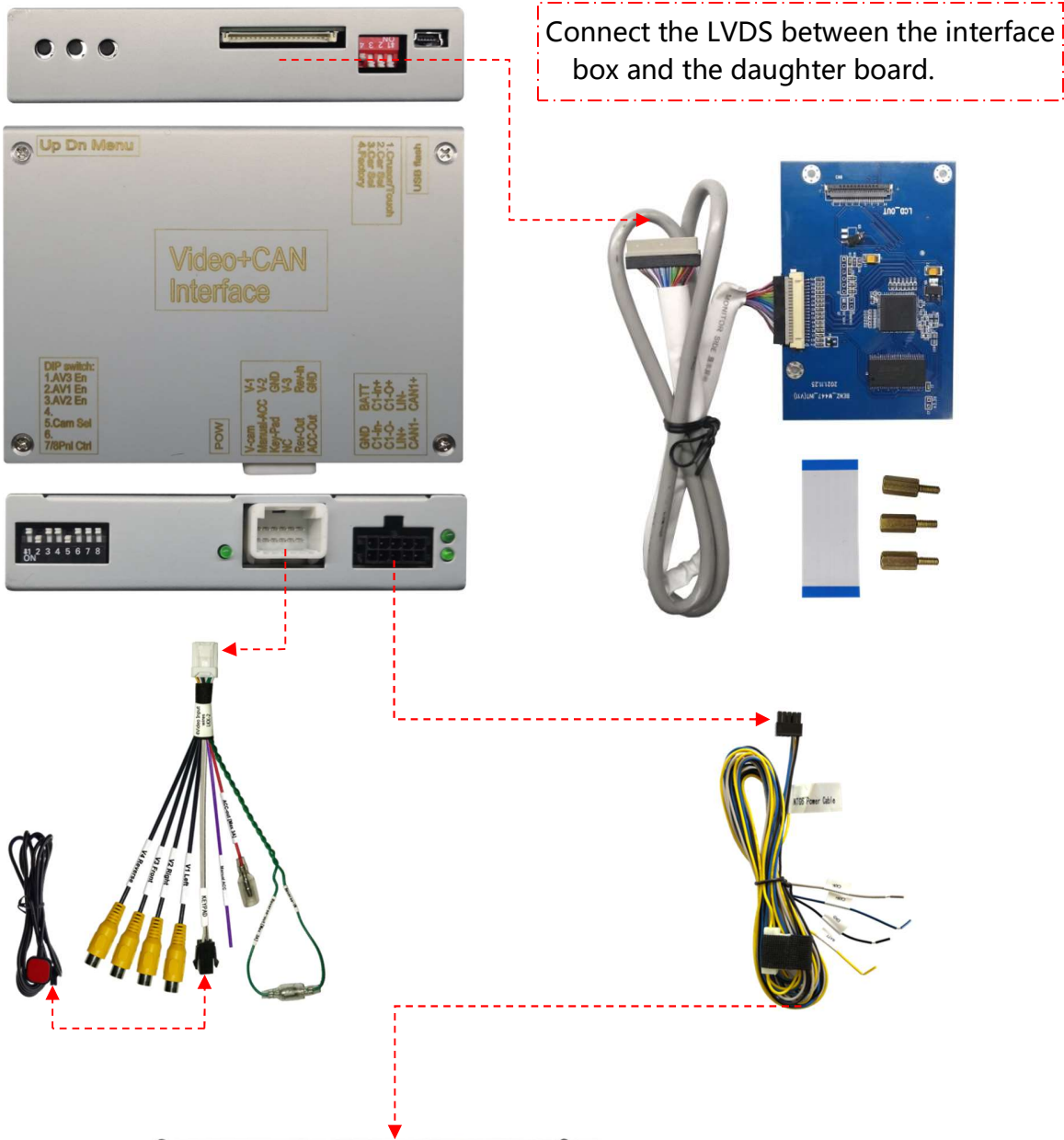
Garmin Audio 30 / 40

Camera / Video interface

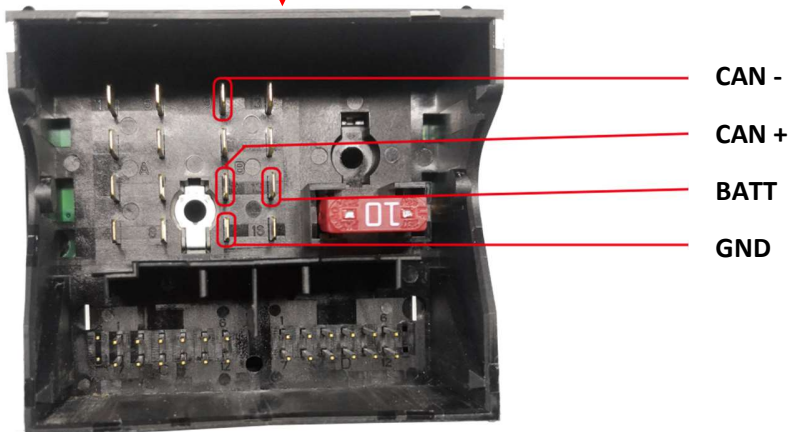


Art. 300 380

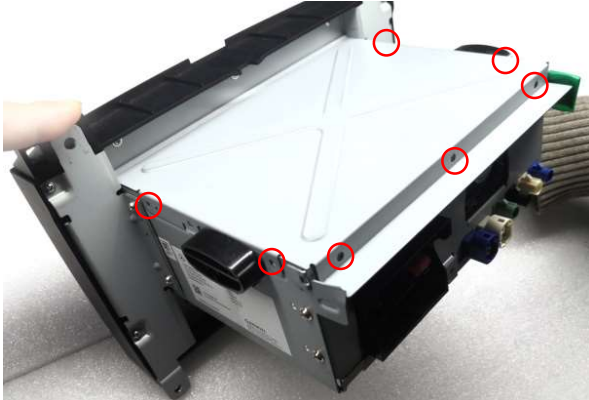
2. Connection Diagram



Picture 1



3. Switchboard PCB installation:



1. Remove the metal cover of the radio unit.



2. Unscrew the three screws in the red circle and add the screw spacers there.



3. Take off the original ribbon cable from main board, and insert interface ribbon cable into the original connector. (the blue side facing outward)



4. Connect the other side of interface ribbon cable into the connector on the backside of Switchboard.




5. Connect the original ribbon cable into the connector on the front of the switch board and fix the three screws.




6. Place the metal cover back, and put all screws back. Notice the position of the LVDS cable.

4. DIP settings

8-DIP settings

DIP Down= ON DIP UP= OFF			
DIP	ON	OFF	Default
1	Enable Front camera (V3)	Disable Front camera (V3)	OFF
2	Enable AV1	Disable AV1	OFF
3	Enable AV2	Disable AV2	OFF
4	No function		OFF
5	Enable Reverse camera (V4)	Disable Reverse camera (V4)	ON
6/7/8	No function		OFF

4-DIP settings:

DIP Down= ON DIP UP= OFF			
DIP	ON	OFF	Default
1/2/3	No function		OFF
4	reserved for manufacturer		OFF

5. OSD Menu Operation

The three side buttons can be used to adjust the image display.

The three buttons are: UP / DN / MENU

To show the OSD menu press and hold the "menu" button.

To adjust an option use UP and DN.



6. Parameters:

No.	Name	Parameter
1	Video input amplitude	0.7Vpp with 75 ohm impedance
2	Sync amplitude	3~5Vpp, 5K impedance, Sync with negative pulse
3	Reverse-out:	12V,3A[max]
4	Reverse-IN:	threshold: 5V
5	Av1, cam video amplitude	0.7Vpp with 75 ohm impedance
6	Av1 , cam format	NTSC/PAL/SECAM automatic switch
7	Power consumption	3.6W [0.3A @12V]
8	Standby current	< 10uA
9	Work temperature	-40 ~ +85C
10	Size	15.22cm * 9cm * 2.1cm